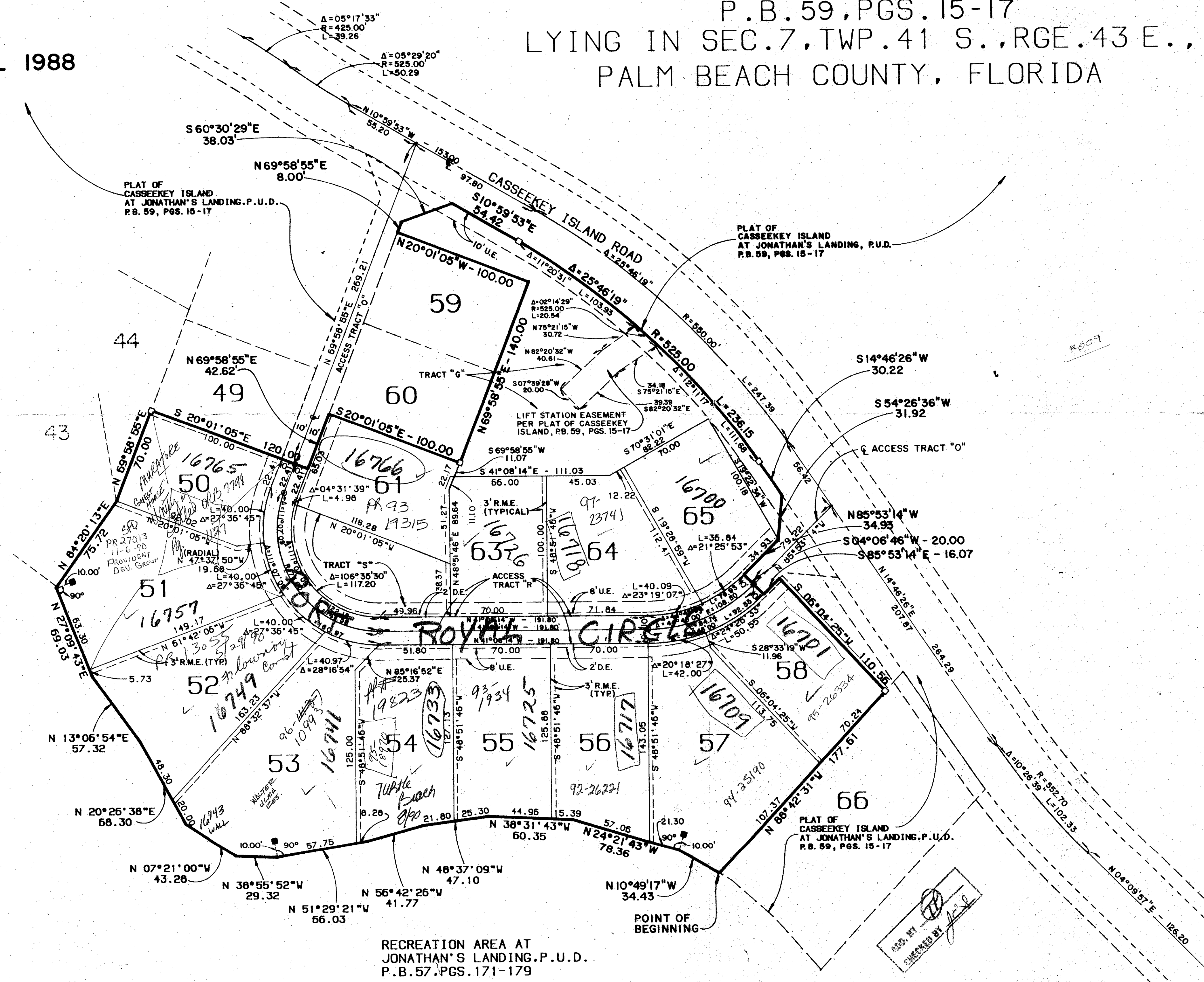


SCALE: 1"=40'

A REPLAT OF  
A PORTION OF  
**CASSEEKEY ISLAND**  
AT JONATHAN'S LANDING P.U.D.  
P.B. 59, PGS. 15-17  
LYING IN SEC. 7, TWP. 41 S., RGE. 43 E.,  
PALM BEACH COUNTY, FLORIDA

APRIL 1988

SHEET 2 OF 2



BEARING BASE:  
THE CENTERLINE OF ACCESS TRACT "O", AS SHOWN ON THE PLAT OF CASSEEKEY ISLAND AT JONATHAN'S LANDING P.U.D., AS RECORDED IN PLAT BOOK 59, PAGES 15-17, PUBLIC RECORDS OF PALM BEACH COUNTY, FLORIDA, IS TAKEN TO BEAR N 69°58'55" E AND ALL BEARINGS SHOWN HEREON ARE RELATIVE THERETO.

THIS INSTRUMENT WAS PREPARED BY:  
VINCENT J. NOEL, P.L.S.  
FOR LINDAHL, BROWNING, FERRARI  
& HELLSTROM, INC.  
210 JUPITER LAKES BOULEVARD  
BUILDING 5000, SUITE 104  
JUPITER, FLORIDA 33458

- = FOUND PERMANENT REFERENCE MONUMENT (P.R.M.) \$1652 PER PLAT OF CASSEEKEY ISLAND, PLAT BOOK 59, PAGES 15-17
- R.M.E. = RECIPROCAL MAINTENANCE EASEMENT
- = SET PERMANENT REFERENCE MONUMENT (P.R.M.)
- ⊙ = PERMANENT CONTROL POINT (P.C.P.)

THE BUILDING SET BACKS SHALL CONFORM TO PALM BEACH COUNTY ZONING CODE.

NO BUILDINGS OR ANY KIND OF CONSTRUCTION SHALL BE PLACED ON UTILITY OR DRAINAGE EASEMENTS.

NO STRUCTURES, TREES OR SHRUBS SHALL BE PLACED ON DRAINAGE EASEMENTS OR UTILITY EASEMENTS FOR WATER & SEWER.

APPROVAL OF LANDSCAPING ON UTILITY EASEMENTS OTHER THAN WATER OR SEWER SHALL BE ONLY WITH APPROVAL OF ALL UTILITIES OCCUPYING SAME.

WHEN DRAINAGE AND UTILITY EASEMENTS CROSS, DRAINAGE EASEMENTS SHALL TAKE PRECEDENCE.

D.E. = DRAINAGE EASEMENT  
U.E. = UTILITY EASEMENT  
N.T.S. = NOT TO SCALE  
L.A.E. = LIMITED ACCESS EASEMENT  
R. = RADIAL LINE

THERE MAY BE ADDITIONAL RESTRICTIONS THAT ARE NOT RECORDED ON THIS PLAT THAT MAY BE FOUND IN THE PUBLIC RECORDS OF PALM BEACH COUNTY, FLORIDA.

PALM BEACH COUNTY HAS THE RIGHT BUT NOT THE OBLIGATION TO MAINTAIN THAT PORTION OF THE DRAINAGE SYSTEM ASSOCIATED WITH COUNTY MAINTAINED ROADS WITHOUT RECOURSE TO PALM BEACH COUNTY, FLORIDA.

SUBDIVISION: Casseekey Island  
BOOK: 66 PAGE: 112  
FILED: 1988 APR 13 10:00 AM  
BY: [Signature]  
MIDNIGHT: [Signature]

TAZ 45  
6/12/88

RECREATION AREA AT  
JONATHAN'S LANDING P.U.D.  
P.B. 57, PGS. 171-179

60/112  
**CASSEEKEY ISLAND**  
0261-010

LINDAHL, BROWNING, FERRARI & HELLSTROM Consulting Engineers, Planners & Surveyors		22
BLDG. 5000, SUITE 104 210 JUPITER LAKES BLVD. JUPITER, FL 33466	10 CENTRAL PARKWAY SUITE 420 STUART, FL 33497	